



DT-8894/93



1.	1
1.1.	1
1.2.	1
1.3.	1
2.	2
3.	2
3.1.	2
4.	3
5.	3
5.1.	3
5.2. DT-8893/94.....	4
6.	5
6.1.	5
6.2.	5
6.3. / /	6
6.4.	6
6.5.	6
6.6.	6
DT-8894.....	6
6.7.	6
6.8.	6
7.	7
7.1.	7
7.2.	7
7.3.	8
7.4.	8
7.5.	8
7.6.	9
7.7.	9
8.	9
8.1.	9
8.2.	9
9.	9
9.1.	9
9.2.	9

1

1.1

1.2

•

•

•

1.3

•

•

• 20

•

• 72

•

0,01 /

(9999)

3%

USB (8894)

120

2

2.1

2.1

	DT-8894	-8893

3.

DT-8893/8894

3.1.

3.1

80%	: (23±5)° , .	DT-8893	DT-8894
/			0,40~30,0
			±3%
			0,01 /
/			1,4~108,0
			±3%
			0,1 /
/			0,8~58,0
			±3%
		0,1	/
^{3/}			0~999900 ^{3/}
			0,001-100
			0~999,9 ²
			-10~60°
			±2°
			0,1°
			-50~500°
			±2°
			0,1°
			30:1
		203 75 50	
		725 .	

CFM:

CMM:

3.1

DT-8893/94

3.2.1.

3.2.1

1 /	1	196,87	3,60	2,24	1,944
1 /	0,00508	1	0,01829	0,01138	0,00987
1 /	0,2778	54,69	1	0,6222	0,54
1	0,4464	87,89	1,6071	1	0,8679
1	0,5144	101,27	1,8519	1,1523	1

4

4.1.

4.1

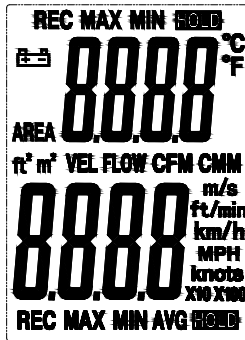
	DT-8893	DT-8894
IEC 6F		
USB		
9 NEDA 1604 IEC 6F22		

5

5.1

DT-8893/94

5.1.1(. .5.1.1).



.5.1.1.

5.1.1

	DT-8894
MAX	
MIN	
AVG	
HOLD	
IRT	
°C°F	
NEXT	
AREA	
	DT-8894/93
REC	
MAX	
MIN	
HOLD	
PC-LINK	
%RH	
°C	
°F	
TYPE-K	
VEL	
FLOW	
AVG	
KNOTS	
CFM	
CMM	
MPH	
KM/H	
FT/MIN	

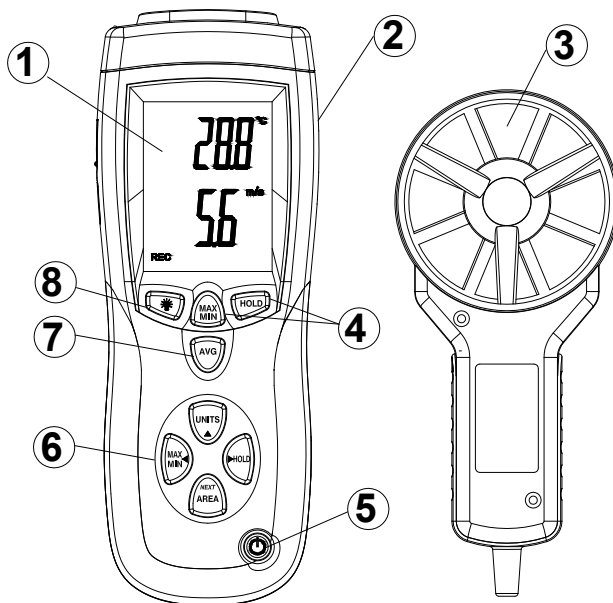
	DT-8893
☀	
MAX	
MIN	
HOLD	
AVG	
UNITS	
NEXT	
AREA	
⏻	

5.2

DT-8893/94
DT-8893

5.2.1 (.

. 5.2.1)



. 5.2.1
DT-8893

5.2.1

1		• • • •
2		2 « »
3		
4	MAX MIN HOLD	
5	/	/
6	MAX/MIN	
7	AVG	20
8	Area	
9	Units	
9		/

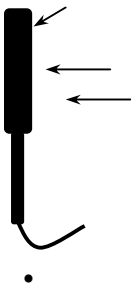
1		:
2		2 « »
3		
4	MAX/MIN	,
5	AVG	20
6	HOLD	,
7	IRT	
8	° °F UNITS	,
9	MAX/MIN	,
10	HOLD	
11	NEXT /AREA	
12	/	/

6

6.1

-
-
-
-

UNITS («VEL» / «FLOW» - (5, .5.2.1)
 9, .5.2.1),
 (6.1.1).



.6.1.1

(1, .5.2.1).

6.2

(CMM / CFM)
16 (DT-8894 - 20) : 8
8

AREA (8, .5.2.1),
 (1, .5.2.1)
 NEXT (8, .5.2.1),
 (),
 (),
 (),
 AREA (8, .5.2.1) CFM CMM. AREA
 (8, .5.2.1) NEXT (8, .5.2.1), 8
 AREA (8, .5.2.1) CFM CMM. AREA
 8

6.3

/ / (5, .5.2.1)
 (3, .5.2.1)
 MAX/MIN/AVG (6, .5.2.1).
 HOLD (4, .5.2.1),
 / /
 MAX/MIN (6, .5.2.1)
 HOLD (4, .5.2.1).

6.4

/ (5, .5.2.1).
 AVG (7, .5.2.1) "0", "AVG".
 AVG (7, .5.2.1)
 (1, .5.2.1)
 : "HOLD" "AVG". 3 20
 AVG (7, .5.2.1) 3
 AREA (8, .5.2.1),

6.5

/ (5, .5.2.1). : CFM CMM.
 UNITS (9, .5.2.1),
 AREA (8, .5.2.1) "AREA"
 MAX/MIN (6, .5.2.1), HOLD UNITS
 AREA (8, .5.2.1) (1,
 .5.2.1).

6.7

DT-8894

/ (5, .5.2.1).
 IRT (7, .5.2.2),
 (1, .5.2.1)

• IRT (7, .5.2.2), 6

6.8.

• « » ☀ 15
• “CFM/CMM” “Average”

6.9

• / (5, .5.2.1).

DT-8893:

• HOLD (4, .5.2.1),

• HOLD (4, .5.2.1) 3

7

7.1

• CD-ROM.
• «setup».
• 2 :
• CP2101WIN.

7.2

• / (5, .5.2.1),

• USB.

•

•

(. .7.2.1).



.7.2.1

•

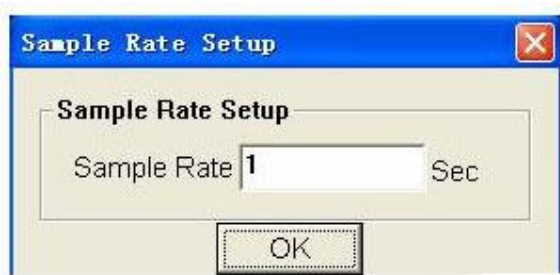
•

(: - «COM port»)

•

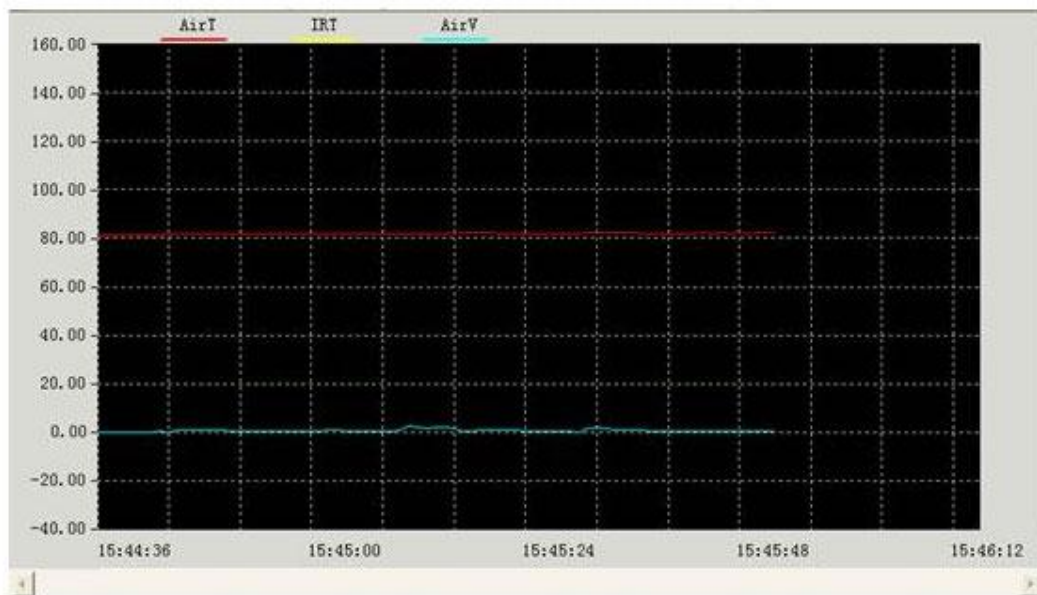
•

(. .7.2.2).



.7.2.2

- ()
- « ».
- (.7.2.3)



.7.2.3

7.3

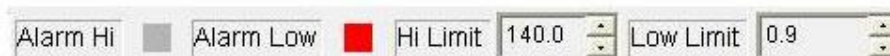
-
-
-

7.4

-

7.5

7.5.1.

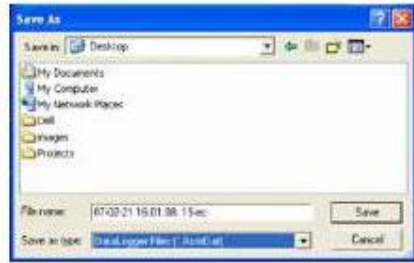


.7.5.1

-
-

7.6

7.6.1).



. 7.6.1

- «AsmDat».

7.7

- « », (. . 7.7.1).



.7.1.1

8

8.1

- -
 -
 -
- (9 NEDA 1604 IEC 6F22)

8.2

-
-
-
-
-
-

9

9.1

« », « » (- 12)

9.2

9.2.1.

9.2.1