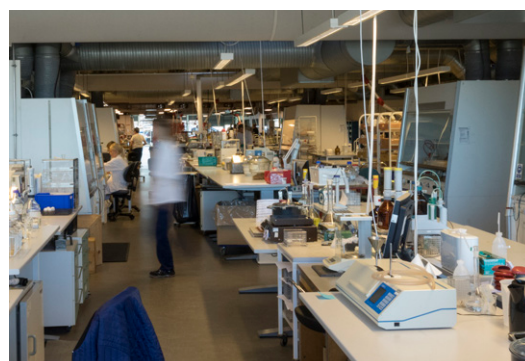
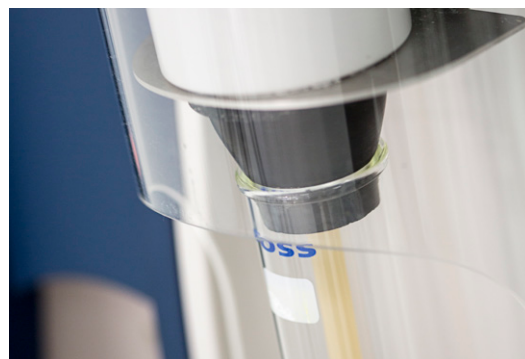


## Kjeltec™ 8100 distillation unit

Semi-automated distillation for Kjeldahl analysis



Kjeltec™ 8100 is a semi-automated distillation unit designed primarily for Kjeldahl analysis, but widely used for many different distillation chemistries.

### A versatile solution that reduces operational costs

A self-adjusting cooling water system saves water and reduces cost, while long-life components ensure minimal downtime. Corrosion-free materials and alkali resistant plastic splash head/tube draining vessel secure long instrument lifetime.

### Innovative features and built in safety

Ensure safe operations with patented SAfE feature for safe distillation of samples that form salt cakes and bellow pumps for accurate reagent dispensing. A variable output steam generator broadens the application area to other volatile components.

### Automatic dispensing of reagents

Automatic dilution, alkali addition, distillation and tube emptying provides ease of use. Pre-programming of reagent addition and distillation time supports the production of accurate results independent of operator.

### Sample type

Raw materials and finished products in food, feed and agriculture

### Parameters

Nitrogen, protein

### Technology

Semi-automated distillation for Kjeldahl and other nitrogen based chemical analysis.

### Approvals

Officially approved (AOAC, EPA, DIN, ISO) for simplified validation

# Specifications

Performance data at 230 V	
Analysis time	3.5 minutes at 30 mg N (6.5 minutes at 200 mg N)
Distillation capacity	~ 40 ml/min at 230 V (at 100% steam addition)
Measuring range	0.1 – 210 mg N
Reproducibility	1% RSD (including the digestion step)
Recovery	> 99.5% at nitrogen levels between 1 – 200 mg N
Tube draining	200 ml in less than 10 seconds
Reagent pump volumes	0 – 150 ml in steps of 10 ml
Delay	0 – 1800 seconds
SAfE (Patented)	0 – 15 seconds
Variable steam addition	30-100 % in steps of 10 %

Installation requirements	
Power supply	200 – 240 V 50 – 60 Hz
Tolerable voltage variation	± 10 %
Power consumption	2 200 W
Water consumption (during distillation only)	3 l/min at water temp of 25°C* 1 l/min at water temp of 15°C <i>*Circulating Cooler recommended at &gt;25°C</i>
Ambient temperature	5 - 40°C
Ambient humidity	max. 80% relative
Drain	For cooling water only
Weight net	35 kg
Dimensions (wxdxh) cm	48 × 58 × 69

## Accessories

- Titration unit complete, 50 ml
- Basket for 20 receiver flasks (250 ml)
- Receiver flasks, 250 ml (set of 10)

FOSS

Tel.: +45 7010 3370

info@foss.dk · www.fossanalytics.com

GB, June 2018